



CPD SE Wales

continuing professional development

South East Wales Consortium / Consortiwm De Ddwyrain Cymru



# The School Effectiveness Framework





CPD SE Wales

continuing professional development

South East Wales Consortium / Consortiwm De Ddwyrain Cymru



# The National Context for the School Effectiveness Framework

- Common understanding of the challenges.
- Commitment of all parties to work differently.
- Accepting responsibilities in making improvements.





CPD SE Wales

continuing professional development

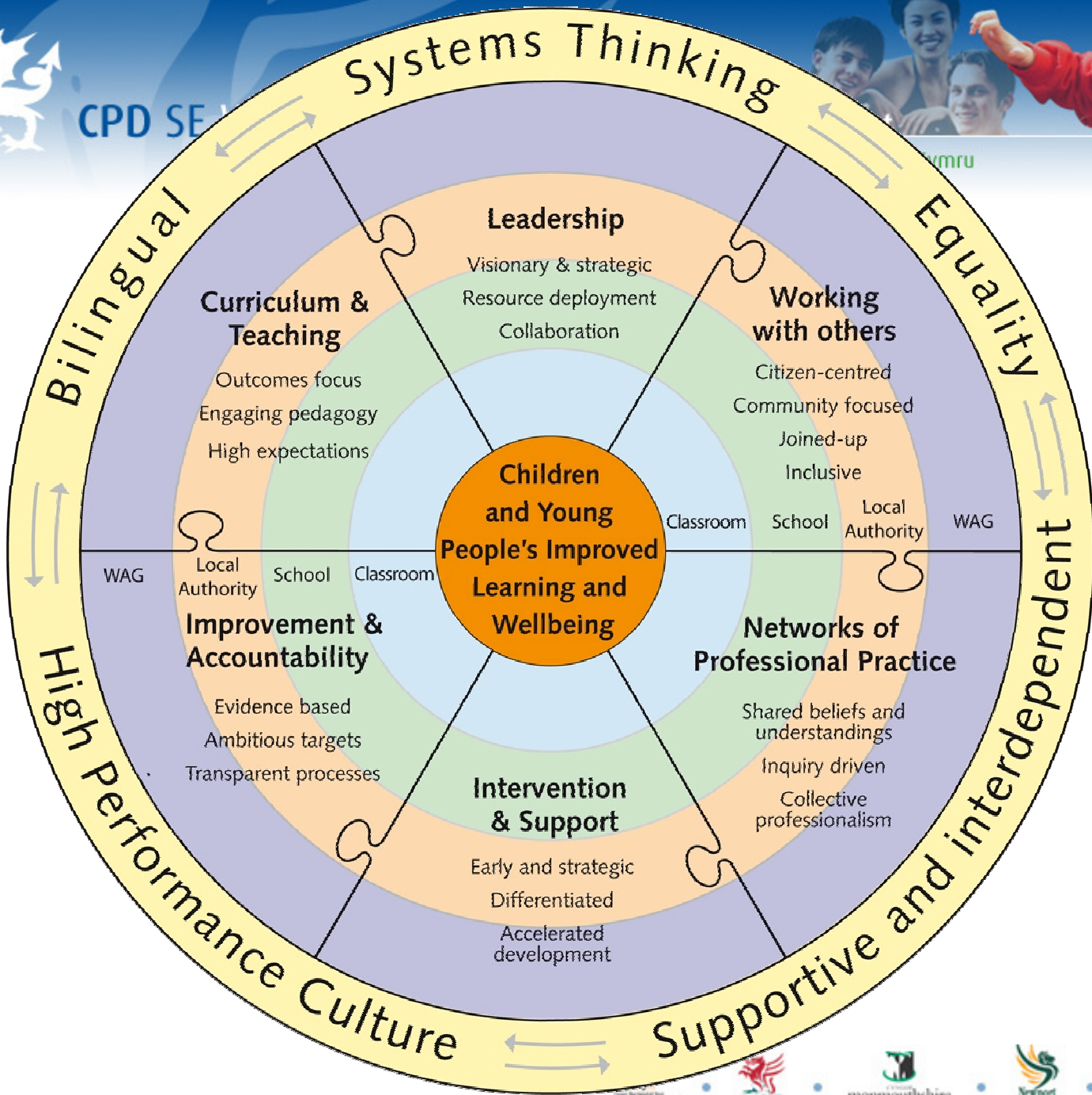
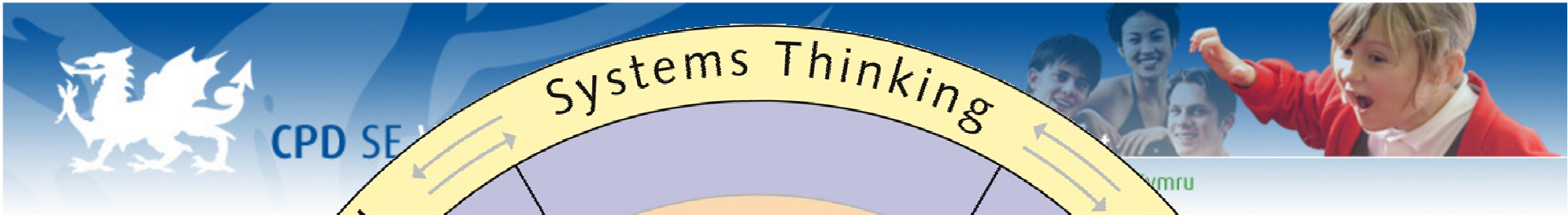
South East Wales Consortium / Consortiwm De Ddwyrain Cymru



# How Is The School Effectiveness Framework the Answer ?

The Schools Effectiveness Framework (SEF) will now become Wales key policy for Education Reform and all other policies will be aligned to it from September 2010.







CPD SE Wales

continuing professional development

South East Wales Consortium / Consortiwm De Ddwyrain Cymru



# Aims of the School Effectiveness Framework

- Achieving better learning outcomes and wellbeing for all children and young people regardless of their social economic background.
- Reducing the variation in learning outcomes within and between classrooms, schools and local authorities.





CPD SE Wales

continuing professional development

South East Wales Consortium / Consortiwm De Ddwyrain Cymru



# School Effectiveness Framework Non-Negotiables

- National Purpose for Schools In Wales
- Embedding of School Effectiveness Framework
- Focus on Challenge, Support and Collaboration
- Annual Self Evaluation
- High Quality Leadership/Training
- Collaboration Through Professional Learning Communities
- Effective Analysis and use of Data
- Focus on inclusion and equity
- Outcome agreements
- Rationalising and Refocusing Grants
- Strategic and Efficient Planning of Schools





CPD SE Wales

continuing professional development

South East Wales Consortium / Consortiwm De Ddwyrain Cymru



# Professional Learning Communities (PLCs)

One of the central pillars of the success of the SEF is the use of PLCs to secure school improvement and reduce within school variation. The PLC model was piloted with a small number of schools as part of the SEF school pilot in 2008/09.





CPD SE Wales

continuing professional development

South East Wales Consortium / Consortiwm De Ddwyrain Cymru



# Professional Learning Communities

The model is predicated upon teachers working together to share and develop professional expertise and knowledge that will positively impact upon student learning outcomes.





CPD SE Wales

continuing professional development

South East Wales Consortium / Consortïwm De Ddwyrain Cymru



# Professional Learning Communities

A professional learning community is a group of connected and engaged teachers who are responsible initially, for driving change in their own school but ultimately who will lead and drive change across a network of schools.





CPD SE Wales

continuing professional development

South East Wales Consortium / Consortiwm De Ddwyrain Cymru



# Professional Learning Communities

PLCs in Wales are being developed as part of tri-level reform, with the Assembly Government providing strategic direction, policy development and support, whilst local authorities/consortia facilitate and support the implementation of PLCs in their locality.





# Professional Learning Communities

CPD SE Wales

continuing professional development

South East Wales Consortium / Cystawm De Ddwyrain Cymru

- Sharing/ trusting
- Move from emphasis on teaching to learning
- Use data to improve learning
- Improved results/ outcomes: be careful what you wish for





CPD SE Wales

continuing professional development

South East Wales Consortium / Consortiwm De Ddwyrain Cymru



# The predicted outcomes of the PLC approach will be:

- improved learning out comes for all children and young people in Wales;
- a self sustaining and cost effective infrastructure for innovation and improvement across the education system in Wales;
- a reduction of ‘within school variation’ through greater consistency of teaching practice within and between PLCs;
- an improved teacher morale and greater teacher and school engagement with SEF and the Pedagogy strategy.





CPD SE Wales

continuing professional development

South East Wales Consortium / Consortiwm De Ddwyrain Cymru



# Regional Plans

- Support and Challenge
- Facilitating PLCs
- Data

**Overarching priority of 21<sup>st</sup> Century Schools Project.**

